

Office to let

Globalworth Campus Building 2

Bucharest, Sector 2, 9 Dimitrie Pompeiu Blvd.

Building information

Building status	Existing
Year of construction	2019
Parking ratio	1 / 80 sq m
Total building area	28 000 sq m

Commercial terms

Office space*	after login *
Parking	after login *
Service charge*	after login *
Minimum lease term	after login *
Availability	after login *

* Asking terms for m²/month

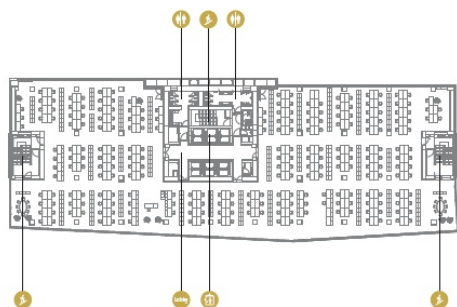
Location



Available space

Building completely leased

Typical floor plan



Public transport

Metro: M1

Tram: 16, 36

Contact



+40 21 302 3400

More information